

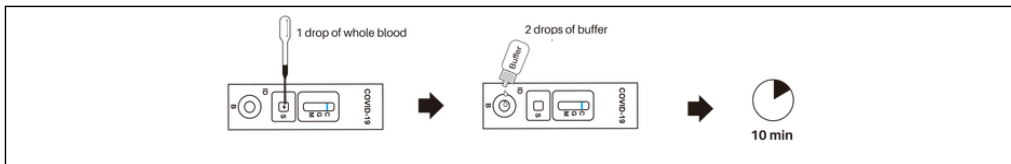
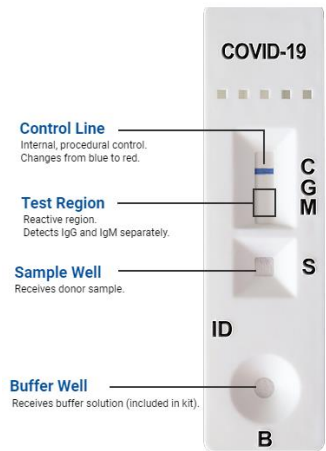


COVID 19 IgG/IgM RAPID TEST CASSETTE (WHOLE BLOOD/SERUP/PLASMA)

VIDEO INSTRUCTION AVAILABLE: www.FeelLikeAViking.com/COVID

Instructions for Use:

1. Remove the testing kit from the sealed foil pouch and use it as soon as possible.
2. Lay testing kit on a flat surface and add blood specimen:
 - a. Prick finger with sterile lancet (included). Transfer 1 drop of whole blood (about 10 µL) into the sample well (S) of the test device. Immediately add 2 drops (about 80 µL) of sample to the buffer well (B) ensuring that finger does not touch the sample.
3. Wait for the control line (C) to change from blue to a red color. If, after 2 minutes, the sample has not moved across the test window or if blood is still present in the sample well (S), add 1 additional drop of sample buffer to the buffer well (B).
4. The results should be read in 10 minutes. Do not interpret the result after 15 minutes.



Reading Results:

Use the diagram below to read results:



This test has been authorized by FDA under an EUA for use by authorized laboratories. Detects the presence of IgM and IgG antibodies against SARS-CoV-2, not for any other viruses or pathogens. Positive results may be due to past or present infection with non-SARS-CoV-2 coronavirus strains, such as coronavirus HKU1, NL63, OC43, or 229E.

To Order Additional Tests Visit: www.FeelLikeAViking.com

Viking Laboratories, LLC – 16024 Manchester Road, Floor 2, Ellisville MO 63011 - 210-826-8900
 Email: Sam@FeelLikeAViking.com